

Office to let

Bectro Center

Bucharest, Sector 3, 29, Sf. Vineri Str.

Building information

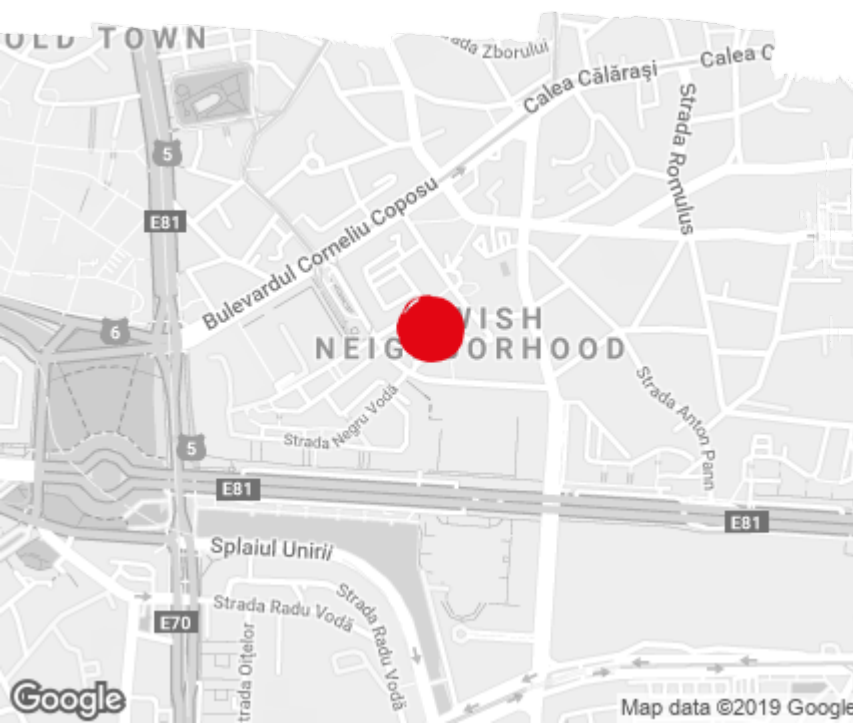
| | |
|----------------------|--------------|
| Building status | Existing |
| Year of construction | 2004 |
| Parking ratio | 1 / 460 sq m |
| Total building area | 4 600 sq m |

Commercial terms

| | |
|--------------------|---------------|
| Office space* | after login * |
| Parking | after login * |
| Service charge* | after login * |
| Minimum lease term | after login * |
| Availability | after login * |

* Asking terms for m²/month

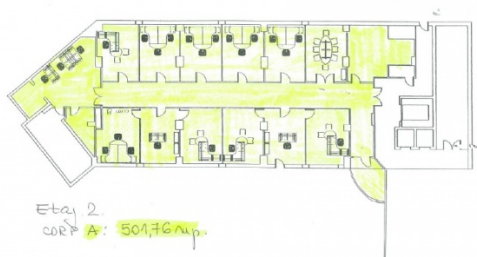
Location



Available space

Building completely leased

Typical floor plan



Public transport

Metro: M1, M2, M3

Bus: 104, 123, 124, 385, 313, 116, 117

Tram: 14, 40, 56

Contact



+40 21 302 3400

More information